

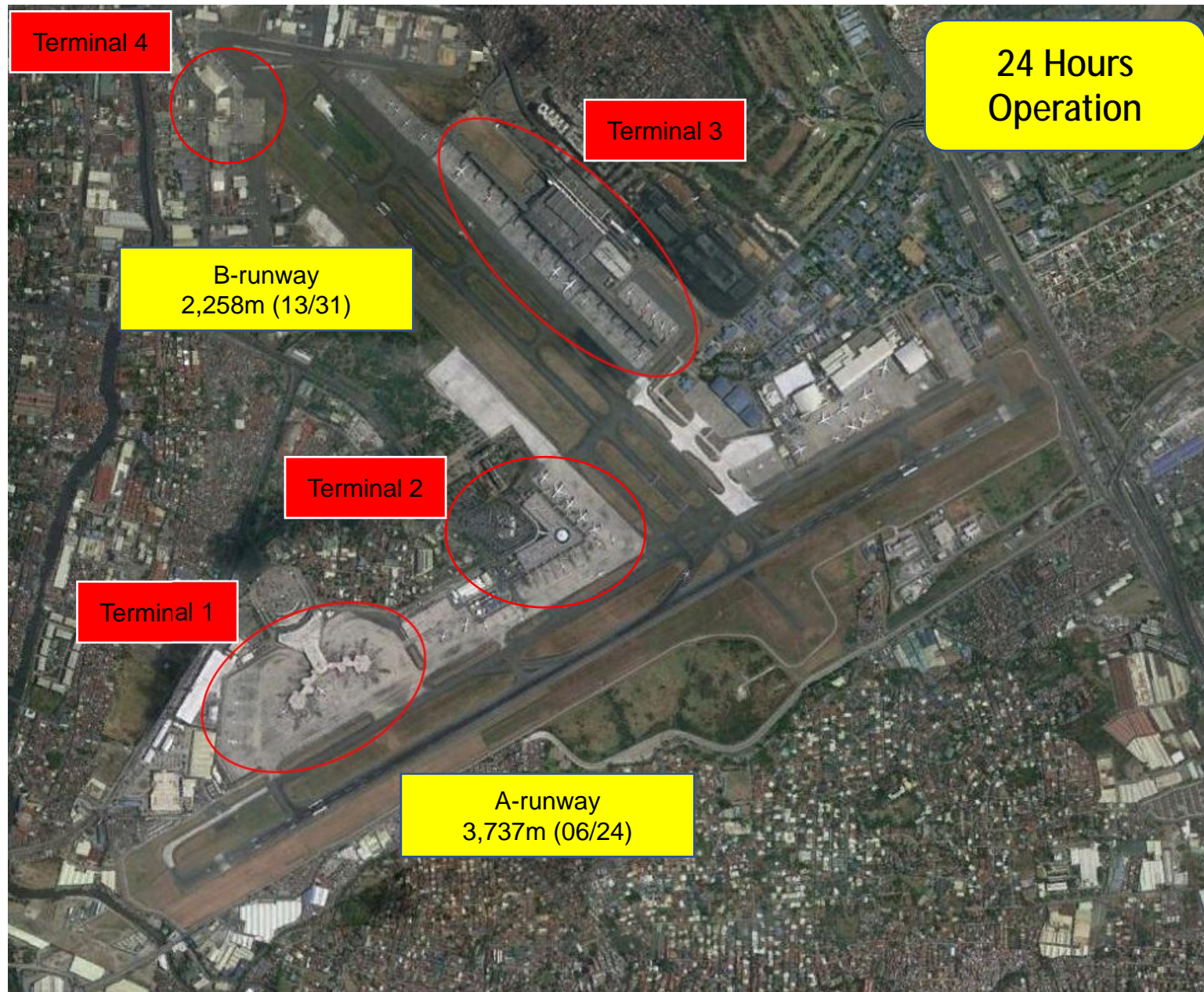
Asia/Pacific Airport Coordinators Association (APACA)

Agenda Item 5

Manila Runway Closure

15th APACA meeting
7 November, 2017
Madrid, Spain

Ninoy Aquino International Airport (NAIA) Basic Information (1)



Ninoy Aquino International Airport (NAIA) Basic Information (2)



NAIA T1



NAIA T2



NAIA T3

Airport Name	The Ninoy Aquino International Airport (IATA: MNL, ICAO: RPLL)		
Airport Location	8km south of city center		
Airport Coordinate	14 30.31N 121 01.10E		
Runways	A runway	06/24	3,737m X 60m
	B runway	13/31	2,258m X 45m
Passenger Terminal	Terminal 1	International 18 aerobridges	
	Terminal 2	PR exclusive for Domestic and International 12 aerobridges	
	Terminal 3	Domestic & International 34 aerobridges and 20 contact gates	
	Terminal 4	Domestic Open Gate	
Airport Parking			

Guidelines

Q Runway is coordinated to a maximum of:

Q 40 Total Movements per Hour

Q 20 Arrivals per Hour

Q 30 Departures per Hour

Q On a rolling 15 minute Window

Q In S18, the runway is at capacity between 0345 – 0000 Local Time

Q During Submission, the unconstrained demand was at 79 movements
per hour

Runway Closure at Ninoy Aquino International Airport (NAIA) (1)

Q Runway 06/24 is closed due to construction of Rapid Exit Taxiway

Q Closed between 0030-0530 LT on all Days

Q Runway 13/31 is available for use. Narrowbody Aircraft only

Q Originally planned to be completed by commencement of S18 season.

Q Further delayed until 30-Apr-18

Q Although NOTAM is not issued ACA :

Q Has been instructed to plan for complete S18 season closure

Q Is working with Airlines to have a contingency in place for 0000-0600

LT closure