

Asia/Pacific Airport Coordinators Association (APACA)

Agenda Item 4

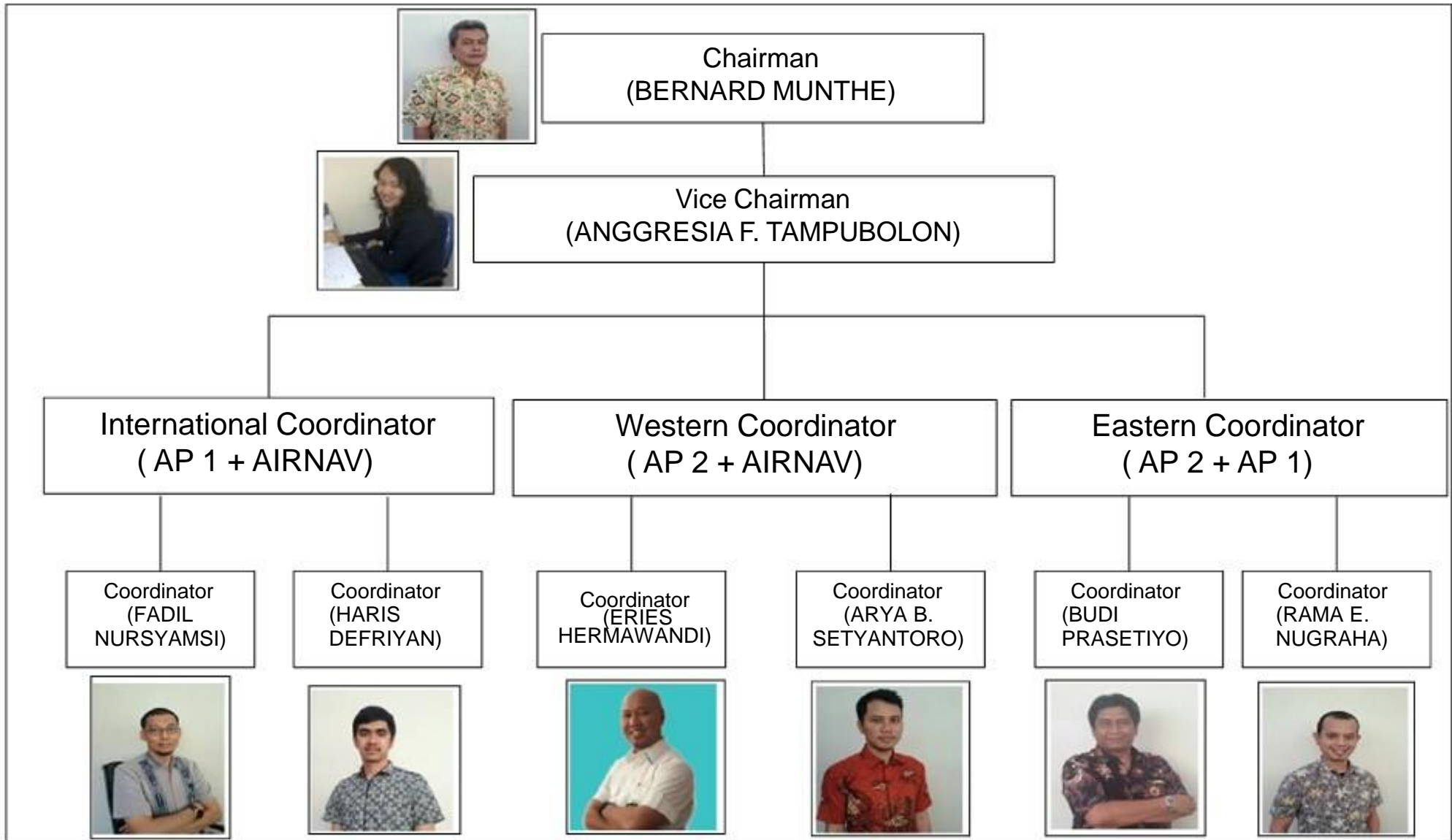
Introduction of Indonesia Airport Slot Management (IASM)

12th APACA meeting
21 June, 2016
Hamburg, Germany

Indonesia Airport Slot Management (IASM) (1)

1. Indonesia Slot Coordination (IDSC) was replaced in 2015 by Indonesia Airport Slot Management (IASM) with Air Transportation Director General Rules (KP280 Year 2015) on procedure for setting time slots.
2. The purpose of the establishment of IASM is as follows:
 - (1) Improve Aviation Safety,
 - (2) Performance Optimization for Airport, Air Navigation Services, Air Transport Enterprises and Foreign Air Transport Company, and
 - (3) Improving coordination among stakeholders
3. The airports IASM are dealing with are as follows:
 - (1) Soekarno - Hatta Jakarta (CGK) ----- IATA Level 2 airport
 - (2) Juanda Airport , Surabaya (SUB)
 - (3) Airport Ngurah Rai Denpasar (DPS) ----- IATA Level 3 airport
 - (4) Sultan Hasanuddin Airport Makassar (UPG)
 - (5) Medan - Kuala Namu Airport (KNO)
 - (6) Airport Sepinggan - Balikpapan (BPN)
 - (7) Sultan Mahmud Airport Badaruddin II - Palembang (PLM)
 - (8) Sentani Airport (DJJ)

Indonesia Airport Slot Management (IASM) (2)



Civil Airports in Indonesia



There are more than 230 airports in Indonesia, most of them are operated by Transportation Ministry technical operation units and state-owned PT Angkasa Pura I & II.

PT. Angkasa Pura is a state enterprise of the Indonesian Department of Transport that is responsible for the management of airports in Indonesia. PT. Angkasa Pura is made up of two parts: PT Angkasa Pura I covering eastern region & PT Angkasa Pura II covering western region.

Air Network in Indonesia

Garuda's Domestic Network



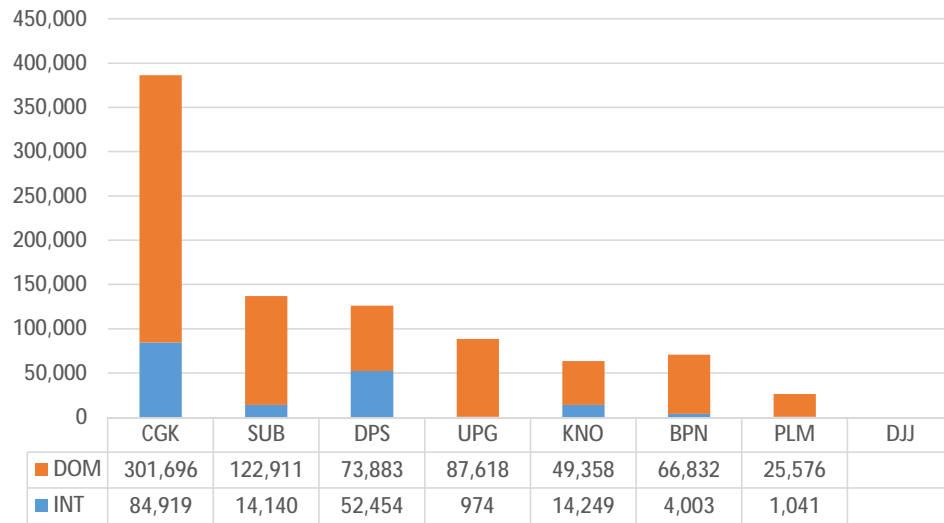
Lion Air's Domestic Network



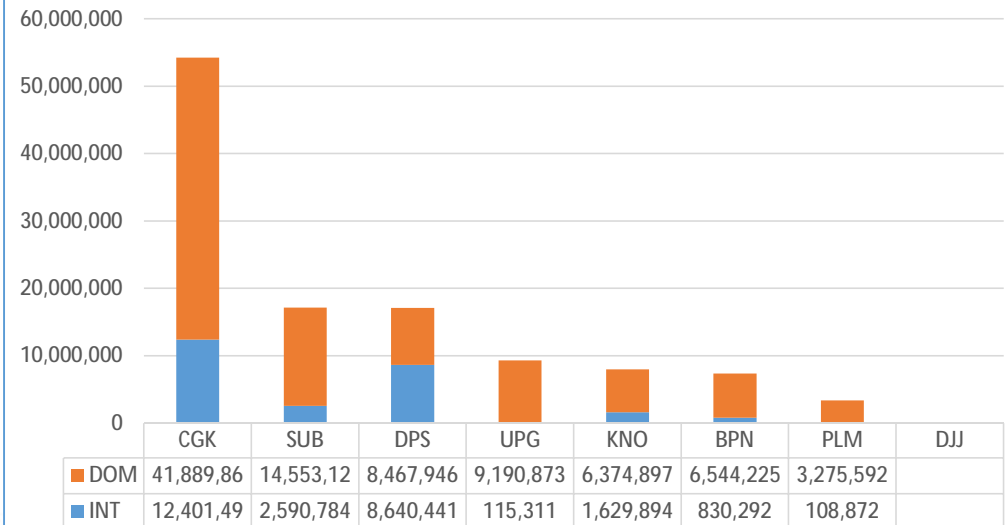
Busy Airports in Indonesia

- (1) Soekarno - Hatta Jakarta (CGK) ----- IATA Level 2 airport
- (2) Juanda Airport , Surabaya (SUB)
- (3) Airport Ngurah Rai Denpasar (DPS) ----- IATA Level 3 airport
- (4) Sultan Hasanuddin Airport Makassar (UPG)
- (5) Medan - Kuala Namu Airport (KNO)
- (6) Airport Sepinggan - Balikpapan (BPN)
- (7) Sultan Mahmud Airport Badaruddin II - Palembang (PLM)
- (8) Sentani Airport (DJJ)

Aircrafts Movement - 2015

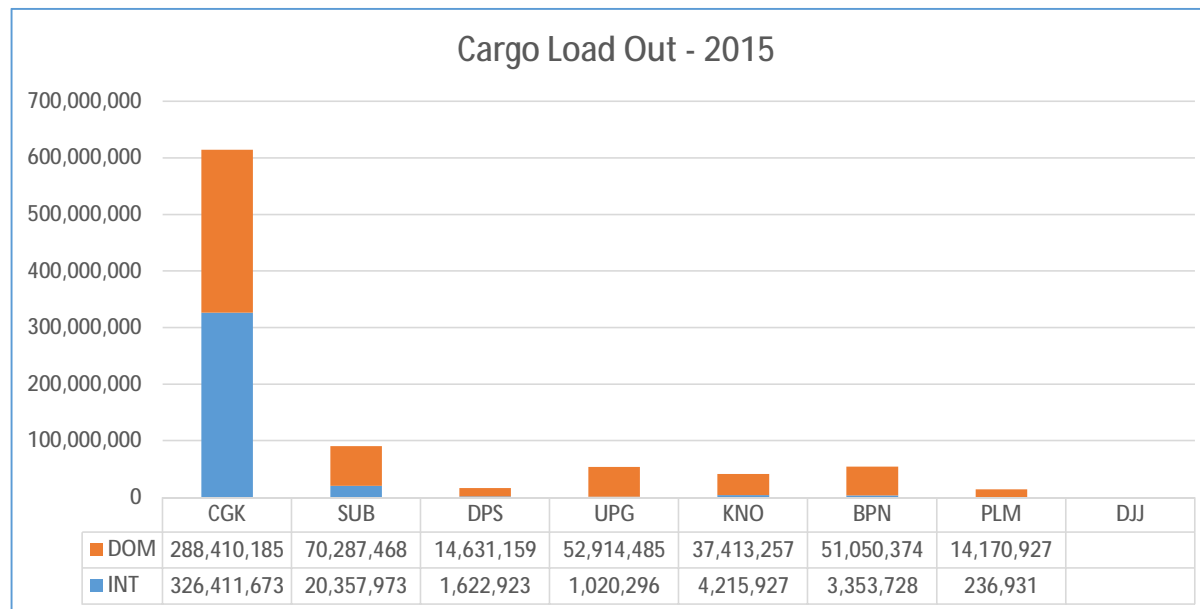


Passengers Movement - 2015

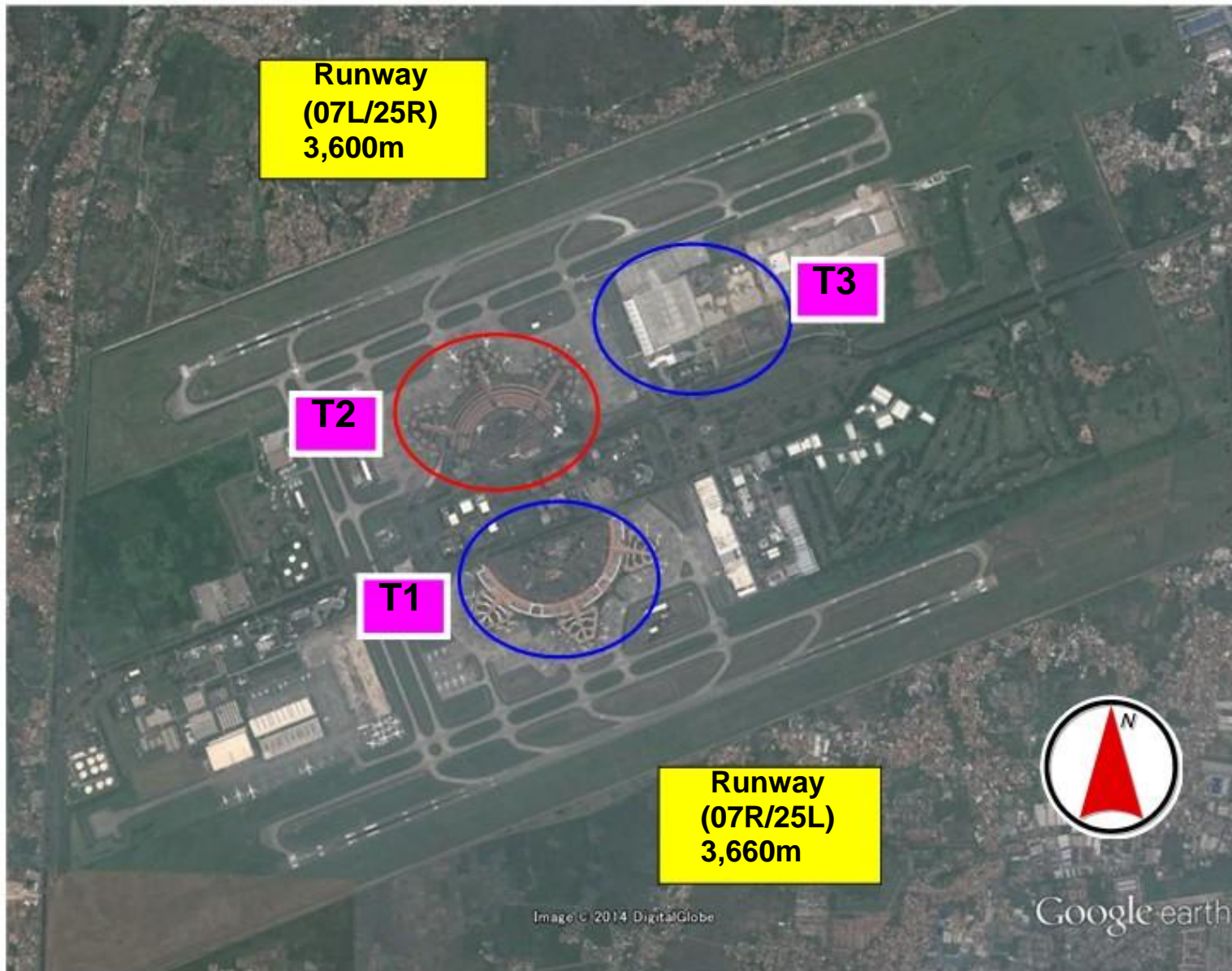


Busy Airports in Indonesia

- (1) Soekarno - Hatta Jakarta (CGK) ----- IATA Level 2 airport
- (2) Juanda Airport , Surabaya (SUB)
- (3) Airport Ngurah Rai Denpasar (DPS) ----- IATA Level 3 airport
- (4) Sultan Hasanuddin Airport Makassar (UPG)
- (5) Medan - Kuala Namu Airport (KNO)
- (6) Airport Sepinggan - Balikpapan (BPN)
- (7) Sultan Mahmud Airport Badaruddin II - Palembang (PLM)
- (8) Sentani Airport (DJJ)



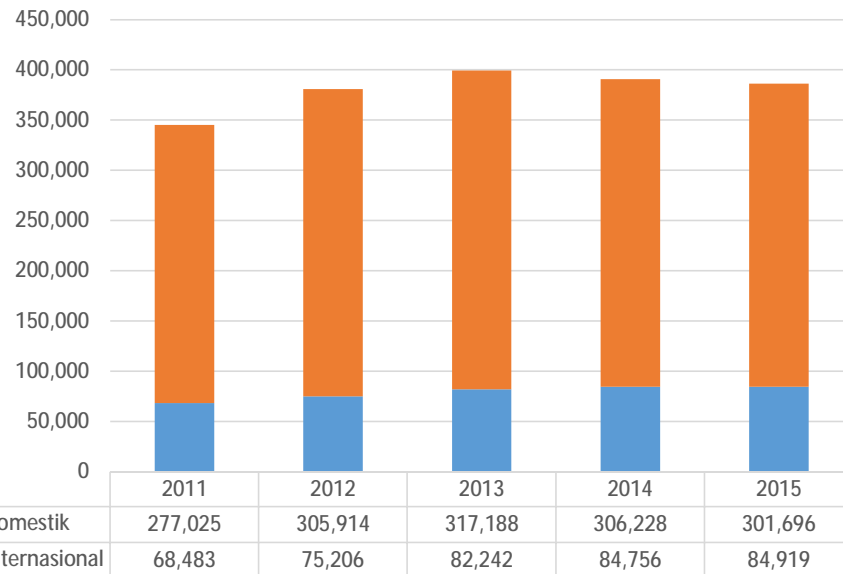
Soekarno-Hatta International Airport (CGK)



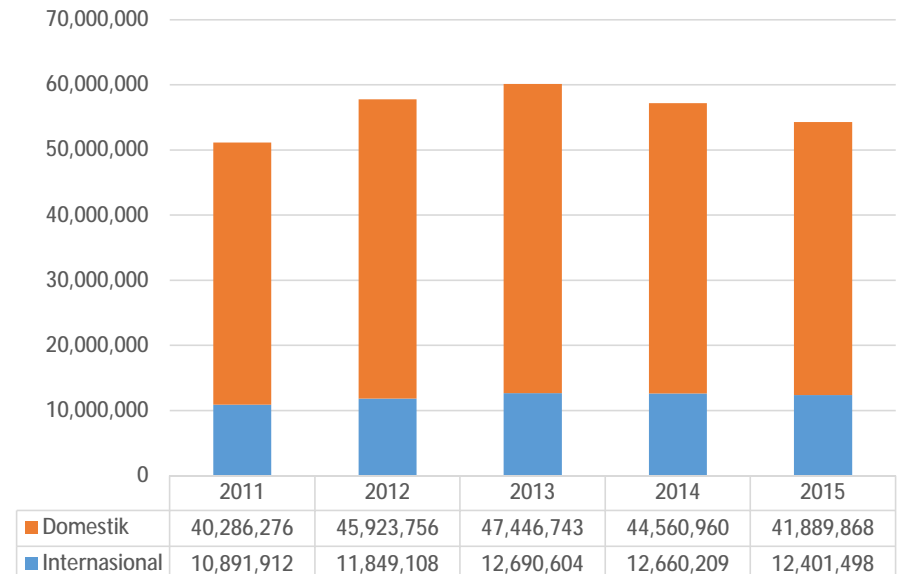
Statistics of Soekarno-Hatta International Airport (CGK)

No.	Description	YEAR				
		2011	2012	2013	2014	2015
1	Aircraft					
	International	68,483	75,206	82,242	84,756	84,919
	Domestic	277,025	305,914	317,188	306,228	301,696
	Total	345,508	381,120	399,430	390,984	386,615
2	Passenger					
	International	10,891,912	11,849,108	12,690,604	12,660,209	12,401,498
	Domestic	40,286,276	45,923,756	47,446,743	44,560,960	41,889,868
	Total	51,178,188	57,772,864	60,137,347	57,221,169	54,291,366

Aircrafts Movement 2011-2015 (CGK)

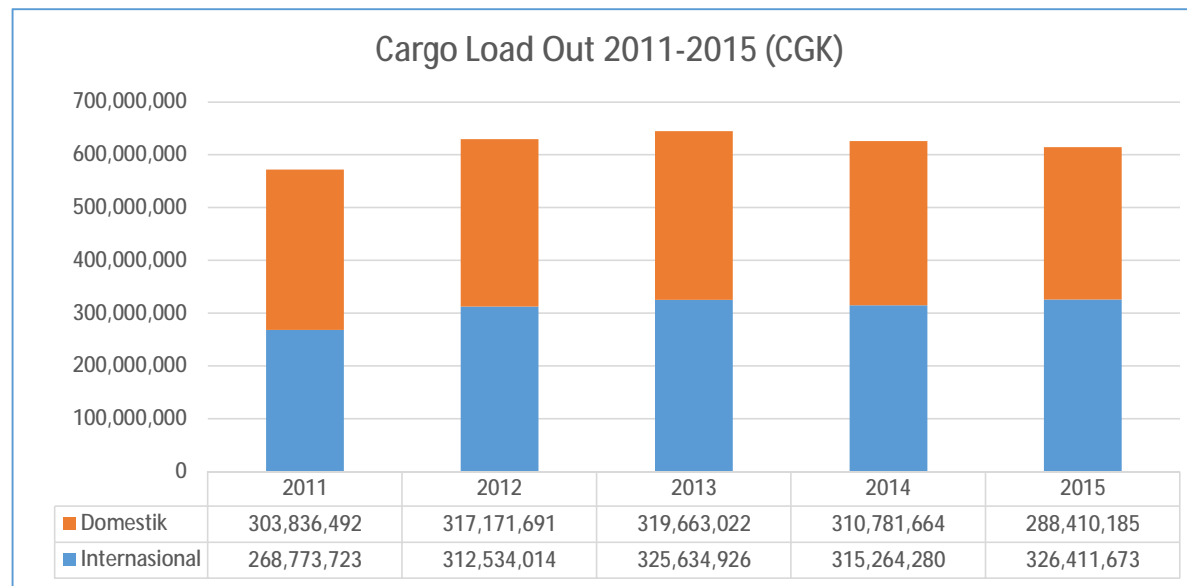


Passengers Movement 2011-2015 (CGK)



Statistics of Soekarno-Hatta International Airport (CGK)

No.	Description	YEAR				
		2011	2012	2013	2014	2015
3	CARGO (KG)					
	Domestic	303,836,492	317,171,691	319,663,022	310,781,664	288,410,185
	International	268,773,723	312,534,014	325,634,926	315,264,280	326,411,673
	Total	572,610,215	629,705,705	645,297,948	626,045,944	614,821,858

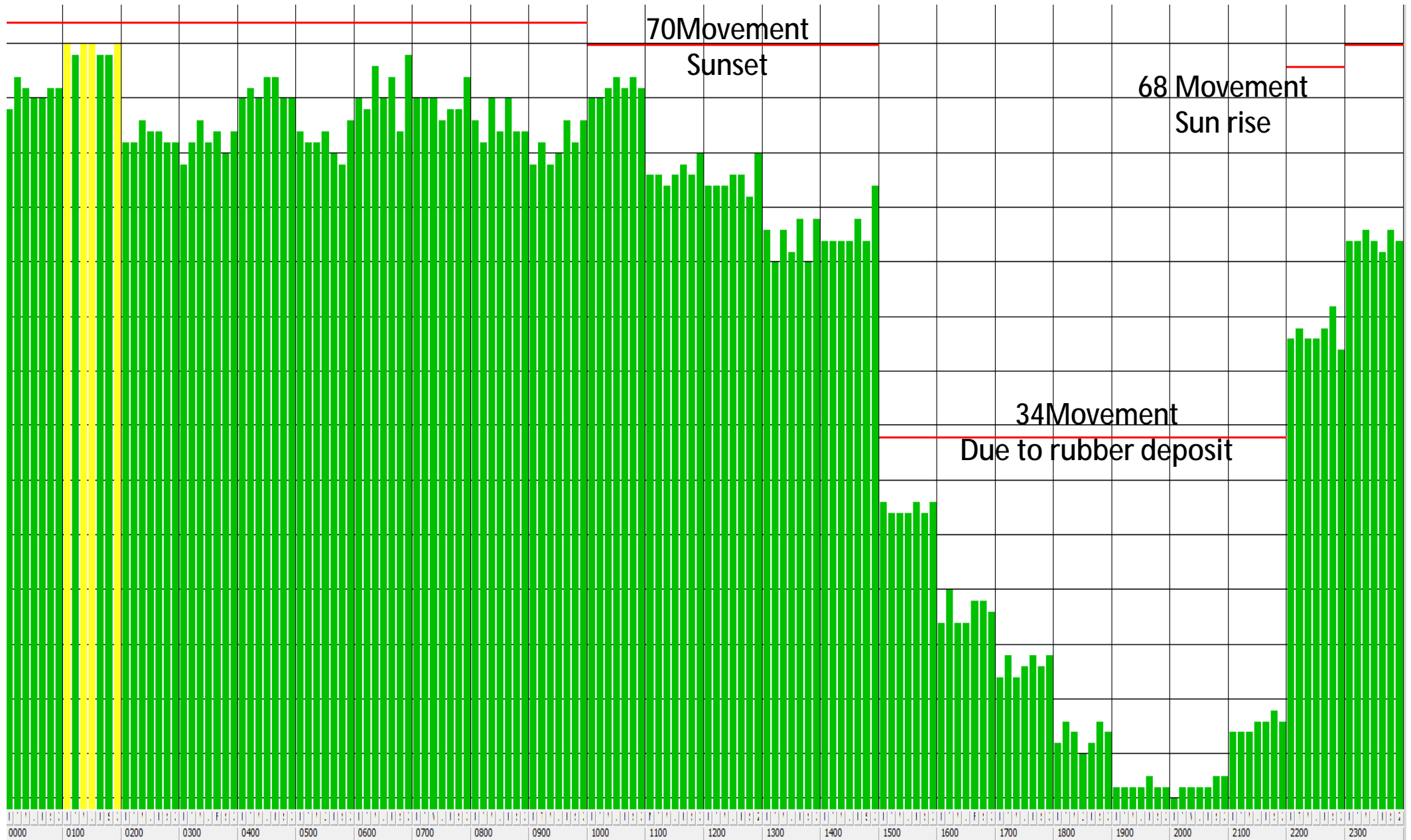


Hourly Operations at Soekarno-Hatta International Airport

72 Movement

May 23, 2016 S16

72 Movement



Grand Design of Soekarno-Hatta International Airport



Website of Indonesia Airport Slot Management (IASM)



NOTIFICATION AIRPORT OF CAPACITY
 TERMINAL 1, 2, 3 SOEKARNO-HATTA INTERNATIONAL AIRPORT
 DATE OF ISSUE: SUMMER 51 MARET - 28 OKTOBER 2014

DAY HOUR UTC	TERMINAL 1A	TERMINAL 1B	TERMINAL 1C	TERMINAL 2D	TERMINAL 2E	TERMINAL 2F	TERMINAL 3 G
17.00-17.59	X	X	X	X	X	X	X
18.00-18.59	X	X	X	X	X	X	X
19.00-19.59	X	X	X	X	X	X	X
20.00-20.59	X	X	X	X	X	X	X
21.00-21.59	X	X	X	X	X	X	X
22.00-22.59	X	X	X	X	X	X	X
23.00-23.59	X	X	X	X	X	X	X
00.00-00.59							
01.00-01.59							
02.00-02.59							
03.00-03.59							
04.00-04.59							
05.00-05.59							
06.00-06.59							
07.00-07.59							
08.00-08.59							
09.00-09.59							
10.00-10.59							
11.00-11.59							
12.00-12.59							
13.00-13.59							
14.00-14.59							
15.00-15.59							
16.00-16.59							

NOTE:
 TYPICAL BUSY WEEK OF: SUMMER 2014
 CITY: JAKARTA
 AIRPORT CODE: CGK
 TERMINAL: JAKARTA
 UTC/GMT Hours
 Which area + 7
 Full
 Closed to Full

X	1
None of Above	
C	2



<http://www.iasmslot.com/>