

# Asia/Pacific Airport Coordinators Association (APACA)

## Agenda Item 2

Introduction of Indonesia Slot Coordinator (IDSC)

8th APACA meeting  
10 June, 2014  
Abu Dhabi, UAE

# Indonesia Slot Coordinator (IDSC) (1)

(1) Air Transportation Director General Rules (KP401 Year 2011) on standard operating procedure on setting time slots

- Ø It stipulates the organization of slot committee and Indonesia Slot Coordinator (IDSC), appointment of busy airports, slot clearance and the flow of coordination.

(2) Air Transportation Director General Rules (KP402 Year 2011) on determination of executive officer for Indonesia Slot Coordinator (IDSC)

- Ø It stipulates the appointment of executive officer of IDSC and the role of each officer.

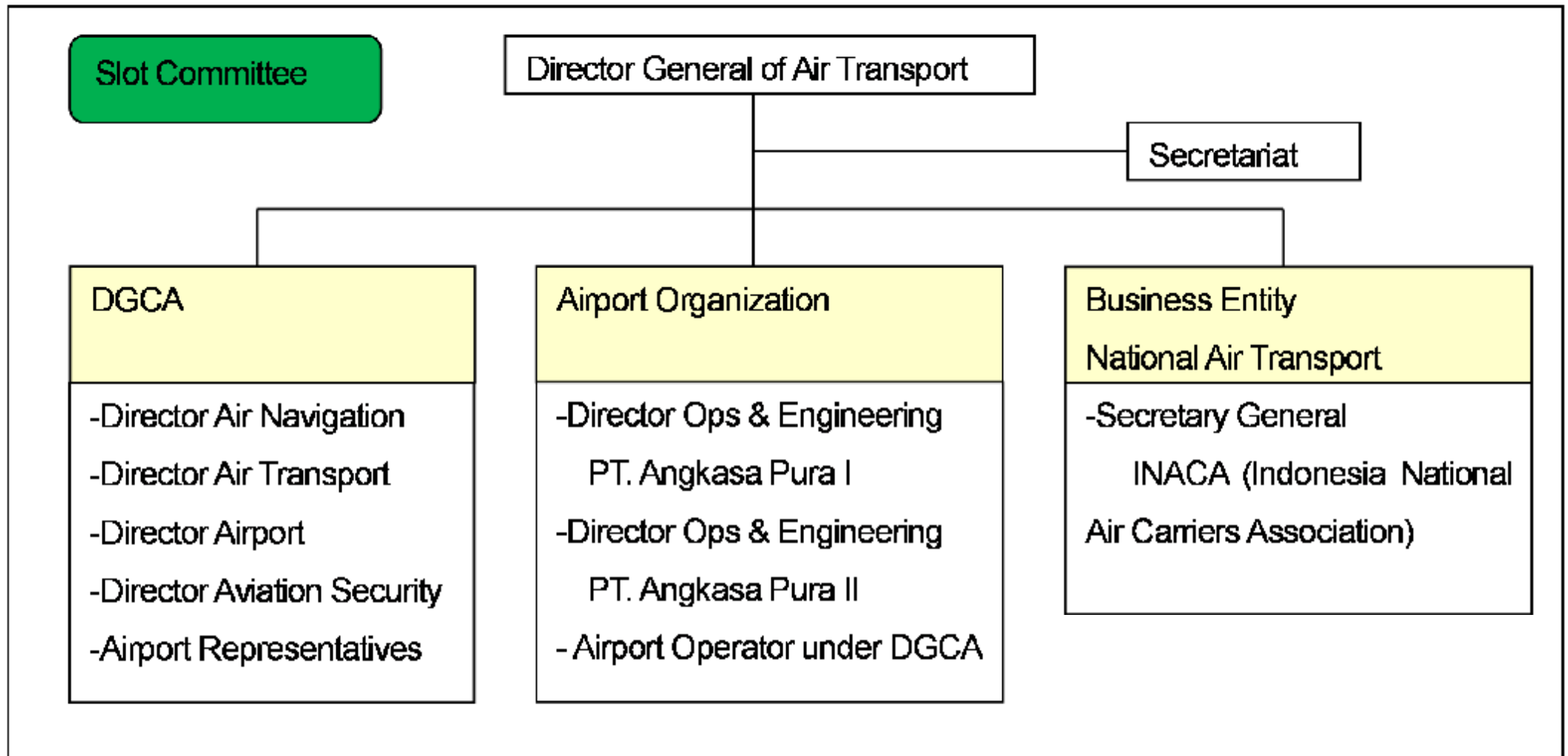
(3) Air Transportation Director General Rules (KP569 Year 2011) on amendment on KP 401 (Standard Operating Procedure on setting time slots)

- Ø This is the revision of KP401 which slightly changes the organization of slot committee and IDSC and the flow of coordination.

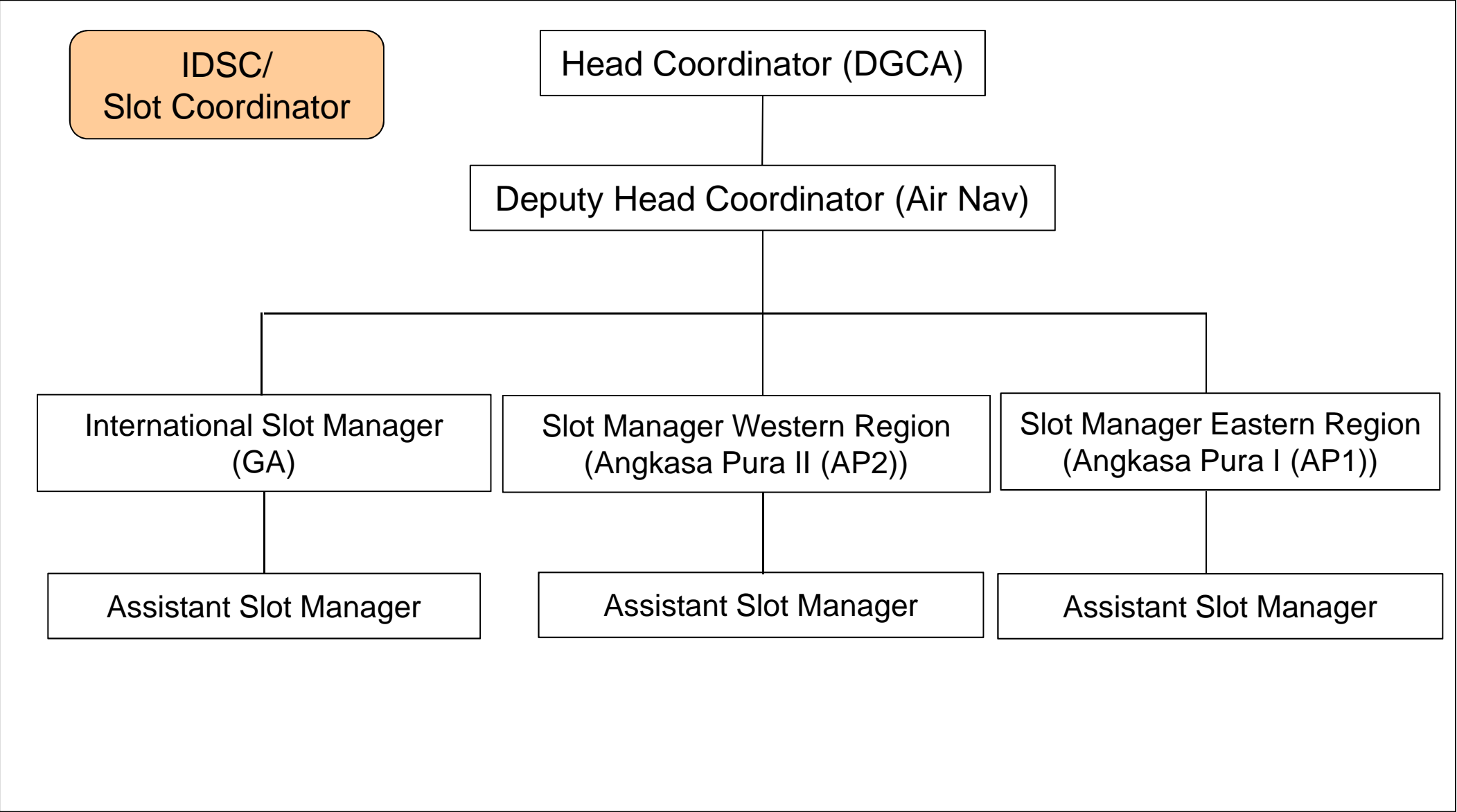
(4) Air Transportation Director General Rules (KP6 Year 2014) on procedure for setting time slots

- Ø This is the newly released rules which replaces KP401. This is a comprehensive rule with the addition of Slot Coordination Implementation Unit (UPKS).

## Indonesia Slot Coordinator (IDSC) (2)



# Indonesia Slot Coordinator (IDSC) (3)





# Air Network in Indonesia

Garuda's Domestic Network



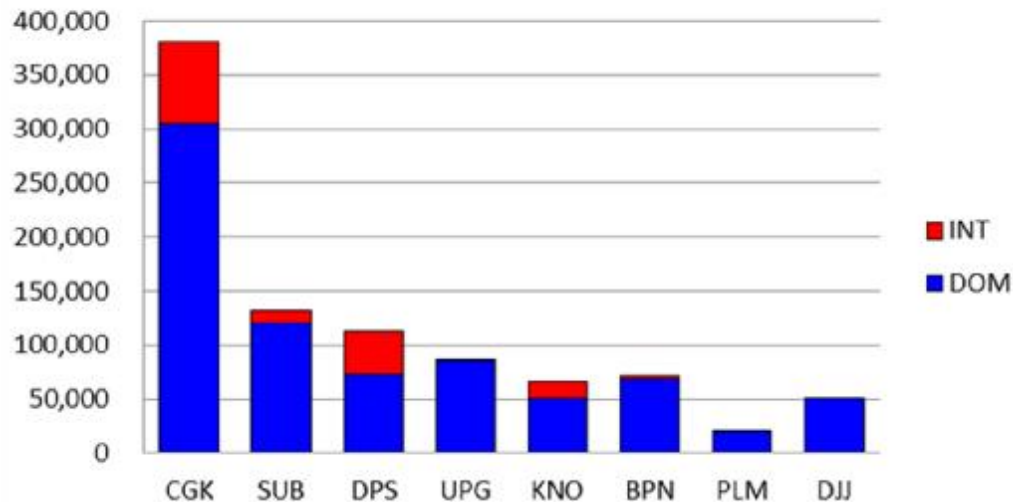
Lion Air's Domestic Network



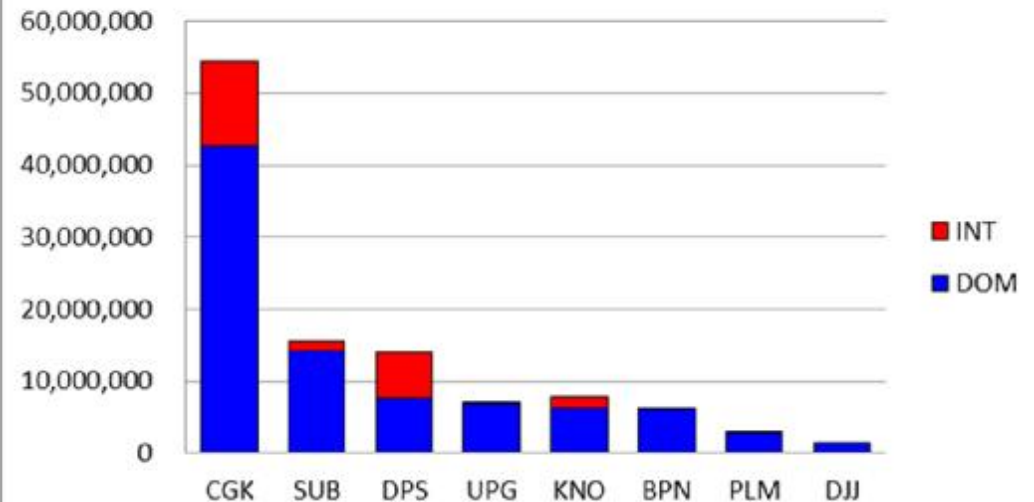
# Busy Airports in Indonesia

- (1) Soekarno - Hatta Jakarta ( CGK ) ----- IATA Level 2 airport
- (2) Juanda Airport , Surabaya ( SUB )
- (3) Airport Ngurah Rai Denpasar ( DPS ) ----- IATA Level 3 airport
- (4) Sultan Hasanuddin Airport Makassar ( UPG )
- (5) Medan - Kuala Namu Airport ( KNO )
- (6) Airport Sepinggan - Balikpapan ( BPN )
- (7) Sultan Mahmud Airport Badaruddin II - Palembang ( PLM )
- (8) Sentani Airport ( DJJ )

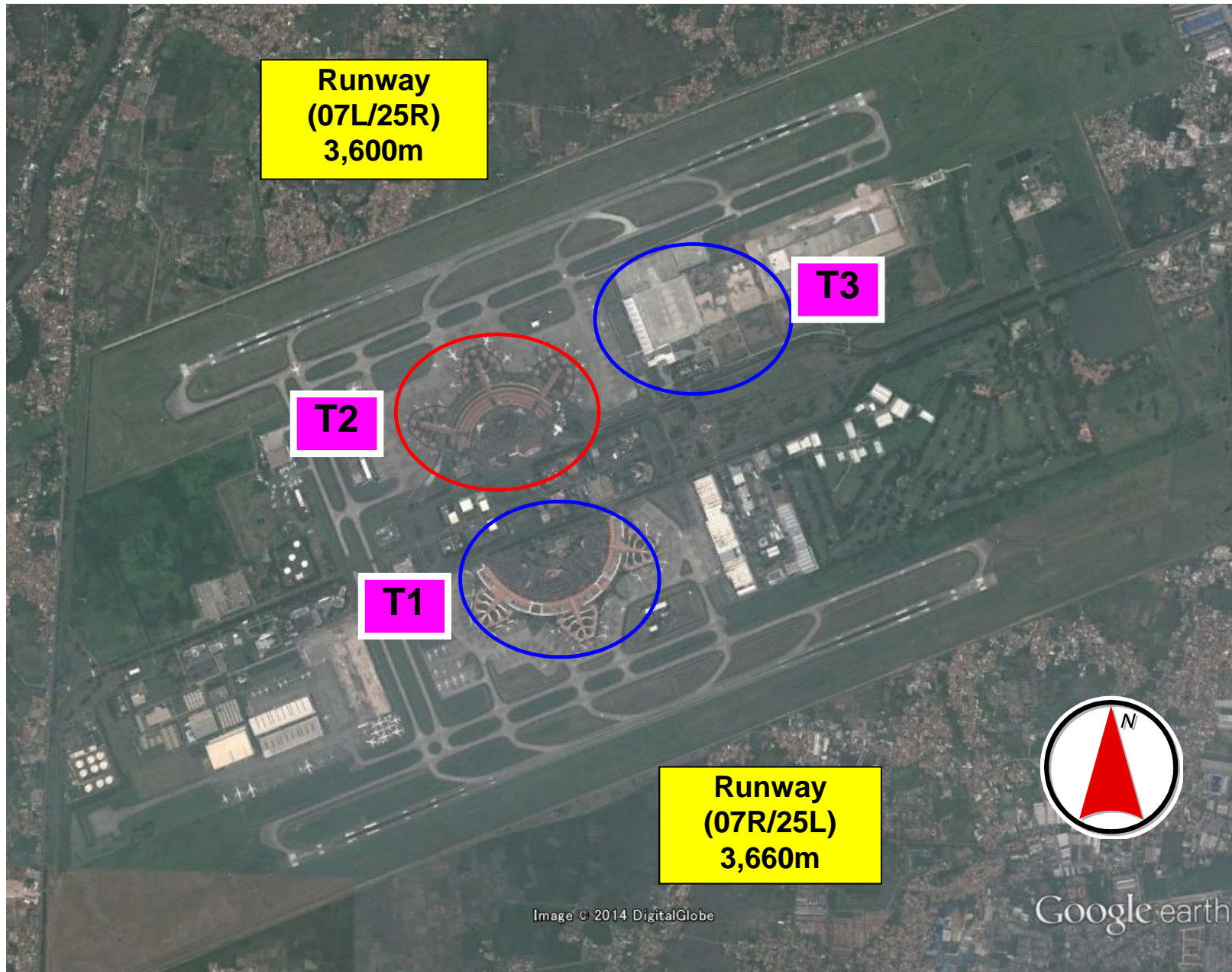
### Aircraft Movements in 2012



### Annual Passengers in 2012



# Soekarno-Hatta International Airport (CGK)

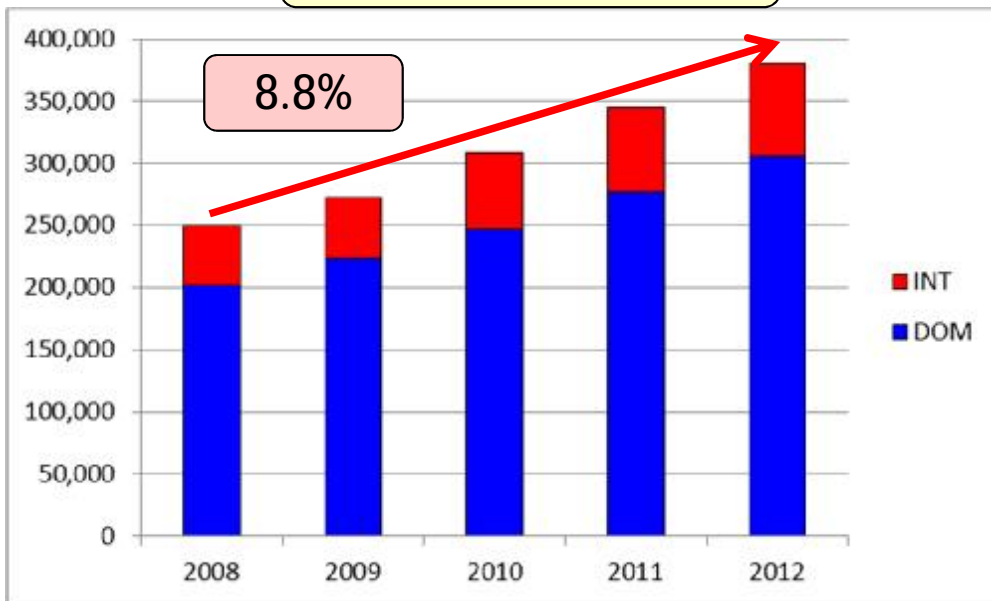




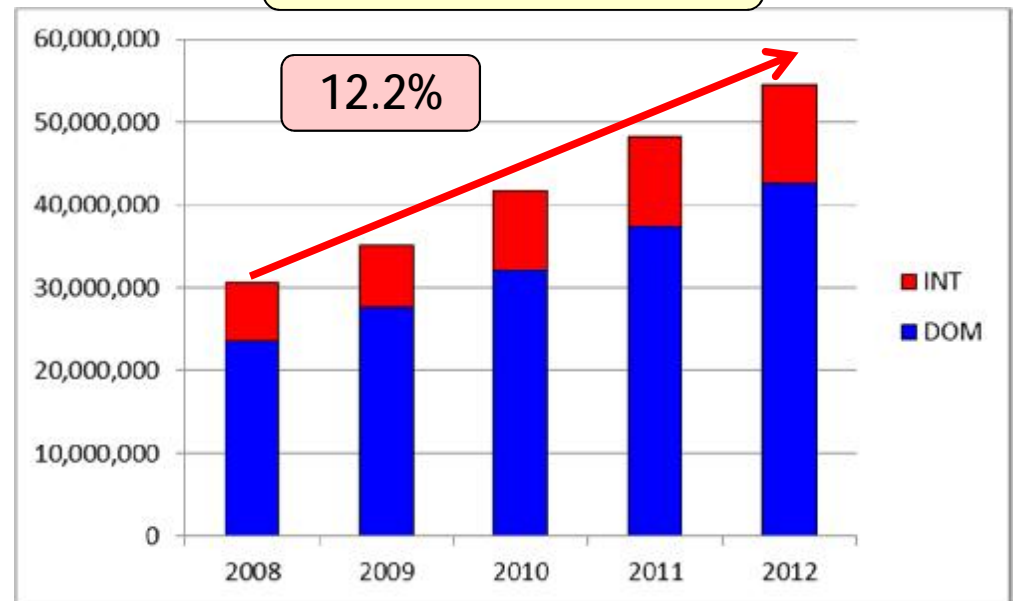
# Statistics of Soekarno-Hatta International Airport (CGK)

		2008	2009	2010	2011	2012
Aircraft Movements	DOM	201,592	223,763	246,559	277,025	305,281
	INT	48,216	48,860	62,253	68,483	75,006
	<b>TTL</b>	<b>249,808</b>	<b>272,623</b>	<b>308,812</b>	<b>345,508</b>	<b>380,287</b>
Annual Passengers	DOM	23,628,454	27,516,503	32,138,485	37,382,521	42,660,093
	INT	7,032,719	7,594,419	9,549,606	10,864,684	11,826,687
	<b>TTL</b>	<b>30,661,173</b>	<b>35,110,922</b>	<b>41,688,091</b>	<b>48,247,205</b>	<b>54,486,780</b>

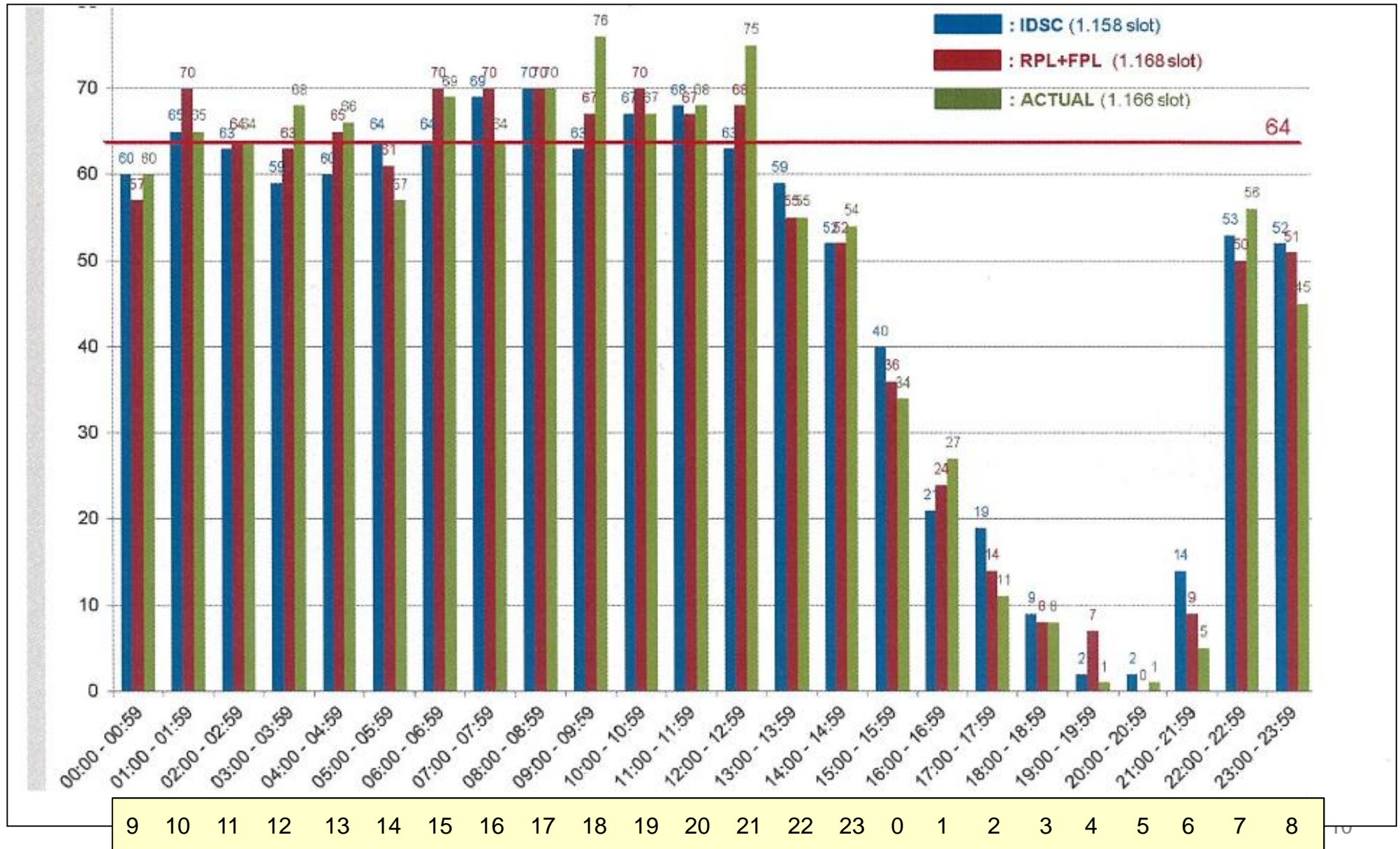
Aircraft Movements



Annual Passengers



# Hourly Operations at Soekarno-Hatta International Airport



# Grand Design of Soekarno-Hatta International Airport



# Website of Indonesia Slot Coordinator (IDSC)



IDSC's Home Page



Declared Airport Capacity

**NOTIFICATION AIRPORT OF CAPACITY**  
**TERMINAL 1,2,3 SOEKARNO-HATTA INTERNATIONAL AIRPORT**  
**DATE OF ISSUE: SUMMER 51 MARET - 26 OCTOBER 2014**

DAY HOUR UTC	TERMINAL 1A							TERMINAL 1B							TERMINAL 1C							TERMINAL 2D							TERMINAL 2E							TERMINAL 2F							TERMINAL 3 G															
	1	2	3	4	5	6	7	1	2	3	4	5	6	7	1	2	3	4	5	6	7	1	2	3	4	5	6	7	1	2	3	4	5	6	7	1	2	3	4	5	6	7	1	2	3	4	5	6	7									
17.00-17.59	X	X	X	X	X	X	X	X	X	X	X	X	X	X	X	X	X	X	X	X	X	X	X	X	X	X	X	X	X	X	X	X	X	X	X	X	X	X	X	X	X	X	X	X	X	X	X	X	X	X	X	X	X	X	X	X	X	X
18.00-18.59	X	X	X	X	X	X	X	X	X	X	X	X	X	X	X	X	X	X	X	X	X	X	X	X	X	X	X	X	X	X	X	X	X	X	X	X	X	X	X	X	X	X	X	X	X	X	X	X	X	X	X	X	X	X	X	X	X	X
19.00-19.59	X	X	X	X	X	X	X	X	X	X	X	X	X	X	X	X	X	X	X	X	X	X	X	X	X	X	X	X	X	X	X	X	X	X	X	X	X	X	X	X	X	X	X	X	X	X	X	X	X	X	X	X	X	X	X	X	X	X
20.00-20.59	X	X	X	X	X	X	X	X	X	X	X	X	X	X	X	X	X	X	X	X	X	X	X	X	X	X	X	X	X	X	X	X	X	X	X	X	X	X	X	X	X	X	X	X	X	X	X	X	X	X	X	X	X	X	X	X	X	X
21.00-21.59	X	X	X	X	X	X	X	X	X	X	X	X	X	X	X	X	X	X	X	X	X	X	X	X	X	X	X	X	X	X	X	X	X	X	X	X	X	X	X	X	X	X	X	X	X	X	X	X	X	X	X	X	X	X	X	X	X	X
22.00-22.59	X	X	X	X	X	X	X	X	X	X	X	X	X	X	X	X	X	X	X	X	X	X	X	X	X	X	X	X	X	X	X	X	X	X	X	X	X	X	X	X	X	X	X	X	X	X	X	X	X	X	X	X	X	X	X	X	X	X
23.00-23.59																																																										
00.00-00.59																																																										
01.00-01.59																																																										
02.00-02.59																																																										
03.00-03.59																																																										
04.00-04.59																																																										
05.00-05.59																																																										
06.00-06.59																																																										
07.00-07.59																																																										
08.00-08.59	X	C						C	C	C																																																
09.00-09.59	C	C	X	X	X	X	X	C	C	C	C	C	C	C																																												
10.00-10.59	L	L	X	X	X	X	X	L	L	X	X	X	X	X																																												
11.00-11.59	C	C	X	X	X	X	X	C	C	X	X	X	X	X																																												
12.00-12.59	C	X	C	C	C	X	X	C	X	C	C	X	X	X																																												
13.00-13.59	X	L	X	L	L	C	X	X	X	X	X	X	X	X																																												
14.00-14.59	X	X	X	X	X	X	X	X	X	X	X	X	X	X																																												
15.00-15.59	X	X	X	X	X	X	X	X	X	X	X	X	X	X																																												
16.00-16.59	X	X	X	X	X	X	X	X	X	X	X	X	X	X																																												

**NOTE :**  
**TYPICAL BUSY WEEK OF :**  
**SUMMER 2014**  
**CITY : JAKARTA**  
**AIRPORT CODE : CGK**  
**TERMINAL : JAKARTA**  
**UTC/GMT Hours**  
 Which are: + 7  
**Full**  
**Closed to Full**  

X	1
---	---

**None of Above**  

C	2
---	---

NAC Charts



Slot Listing

<http://www.indonesiaslotcoordinator.org/index.php>