

Asia/Pacific Airport Coordinators Association (APACA)

Agenda Item 5

Schedule Facilitation (Level 2 Airport)

6th APACA meeting
20 June, 2013
Copenhagen, Denmark

The Role of Facilitator

THE ROLE OF FACILITATOR

The facilitator will:

- a) Collect data on the planned operations of all airlines operating or planning to operate at the airport;
- b) Make available to interested parties details of the coordination parameters and utilization of available capacity; and
- c) Facilitate the process of voluntary schedule adjustments by airlines to avoid exceeding the airport's coordination parameters.

PROCESS OF FACILITATION

1. At Level 2 airports no slots are allocated.
2. The process of facilitation centers on voluntary cooperation between airlines and the facilitator.
3. Airlines and facilitators should use the SSIM message exchange formats developed for communication at Level 2 airports.

The Process of Facilitation

4 The Calendar of Coordination Activities specifies the dates when airlines submit their planned operations to the facilitator and the dates when the facilitator must reply to the airlines.

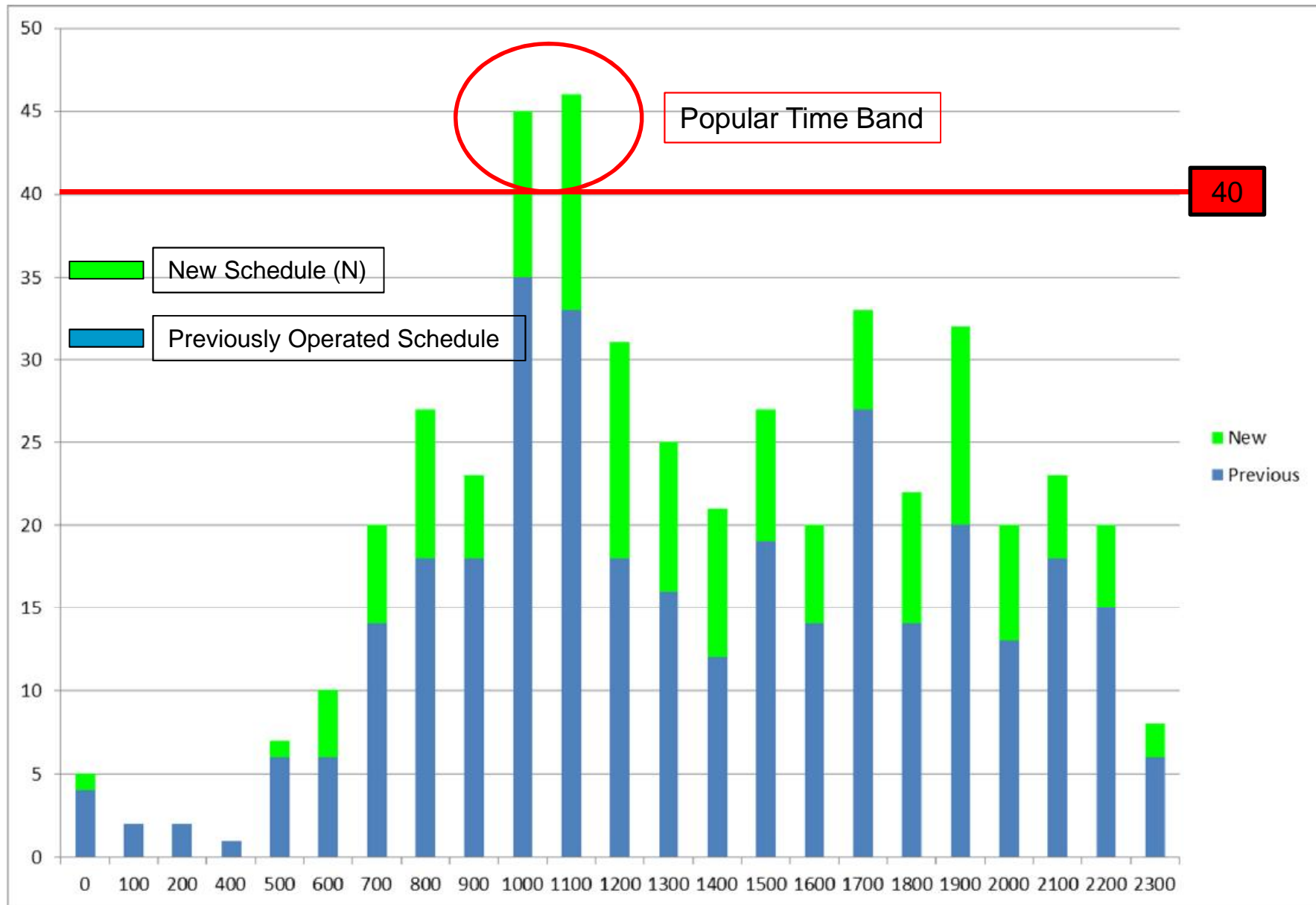
5 Before the SC, the combined demand of all airlines should be reviewed with the airport managing body and any capacity shortages identified. If elements of the airport infrastructure can be modified to meet demand, then no voluntary schedule adjustments will be required.

6 Facilitators must reply to each airline's Initial Submission in SAL format, listing the planned operations of that airline held in the facilitator's database and any recommended schedule adjustments. Airlines should arrange to meet with the facilitator at the SC to resolve any outstanding issues.

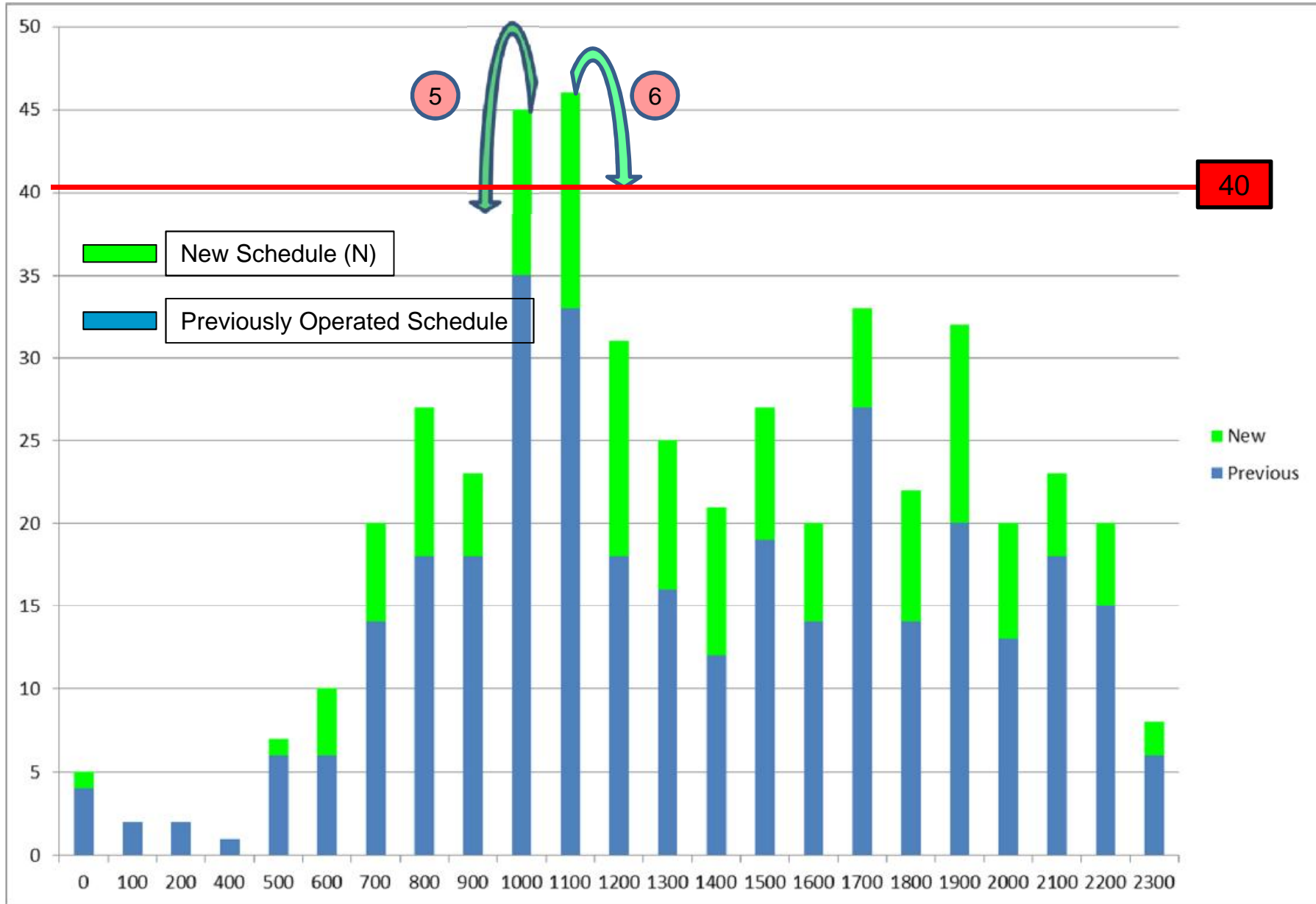
7 After the SAL distribution date, data on planned operations collected by the facilitator must be made available to all interested parties.

8 Airlines and other aircraft operators should update the facilitator with all changes to their planned operations as soon as they are known. Facilitators must inform the airport of all changes to planned operations.

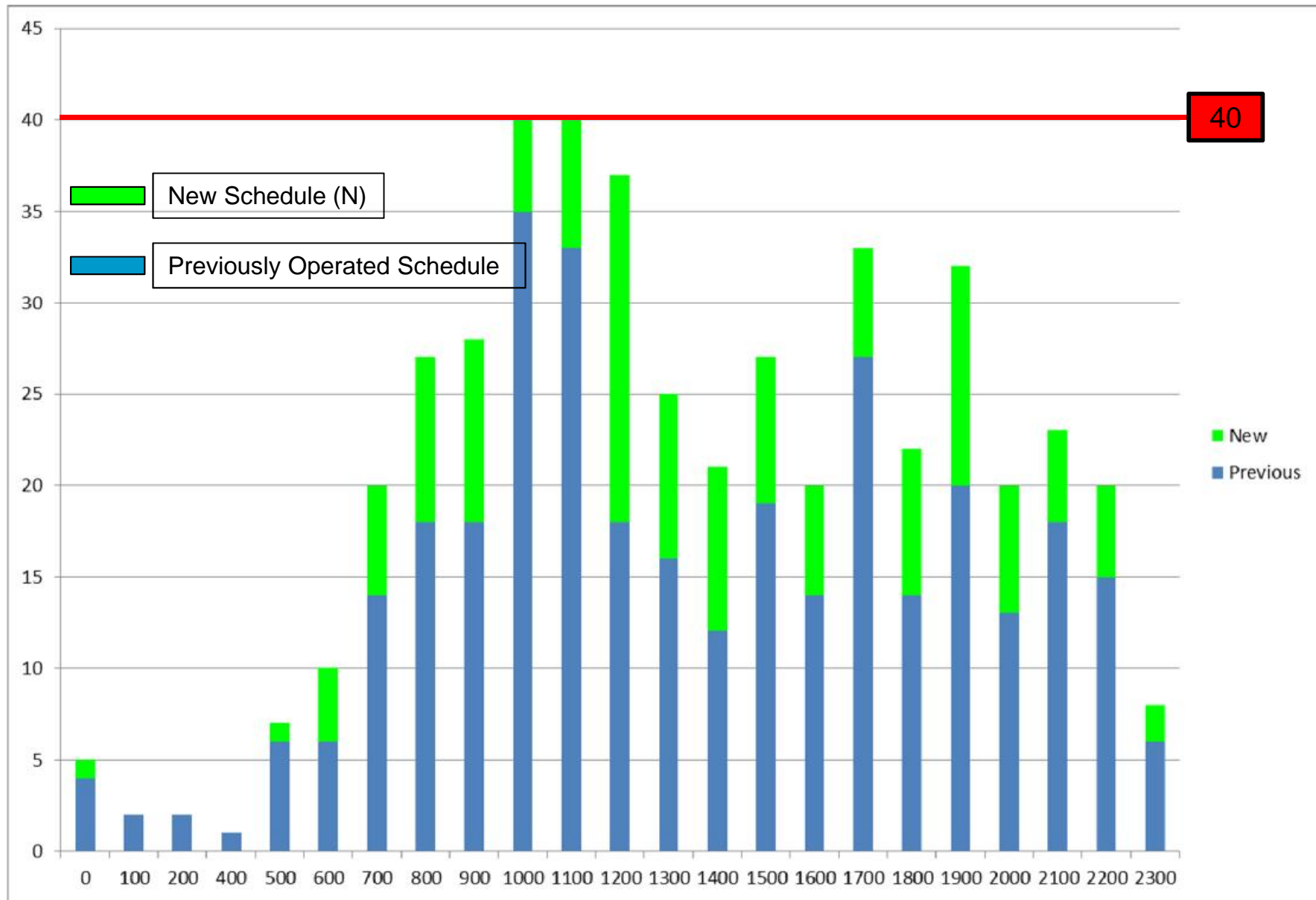
Request Distribution at Initial Submission



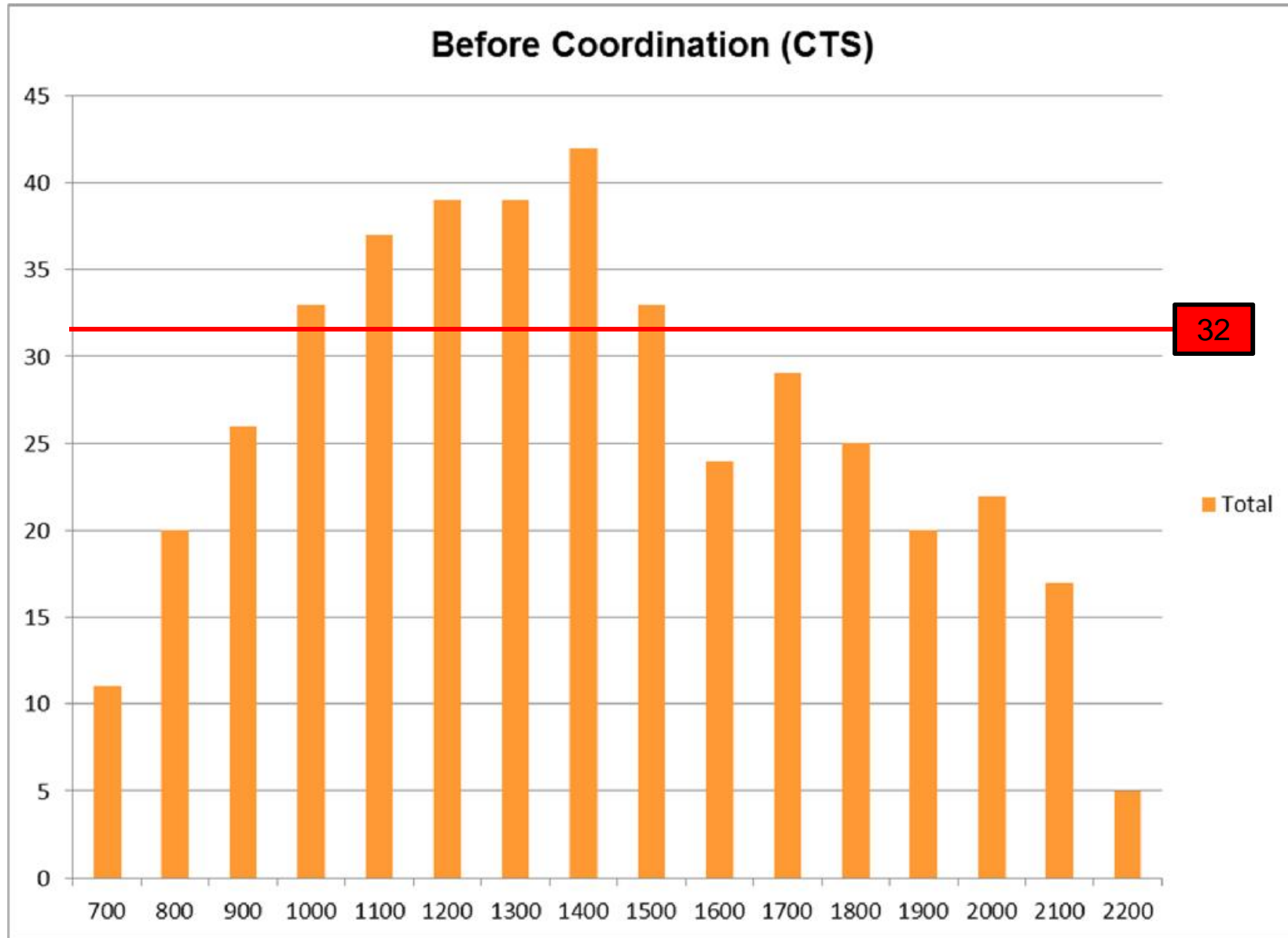
First Step of Schedule Facilitation



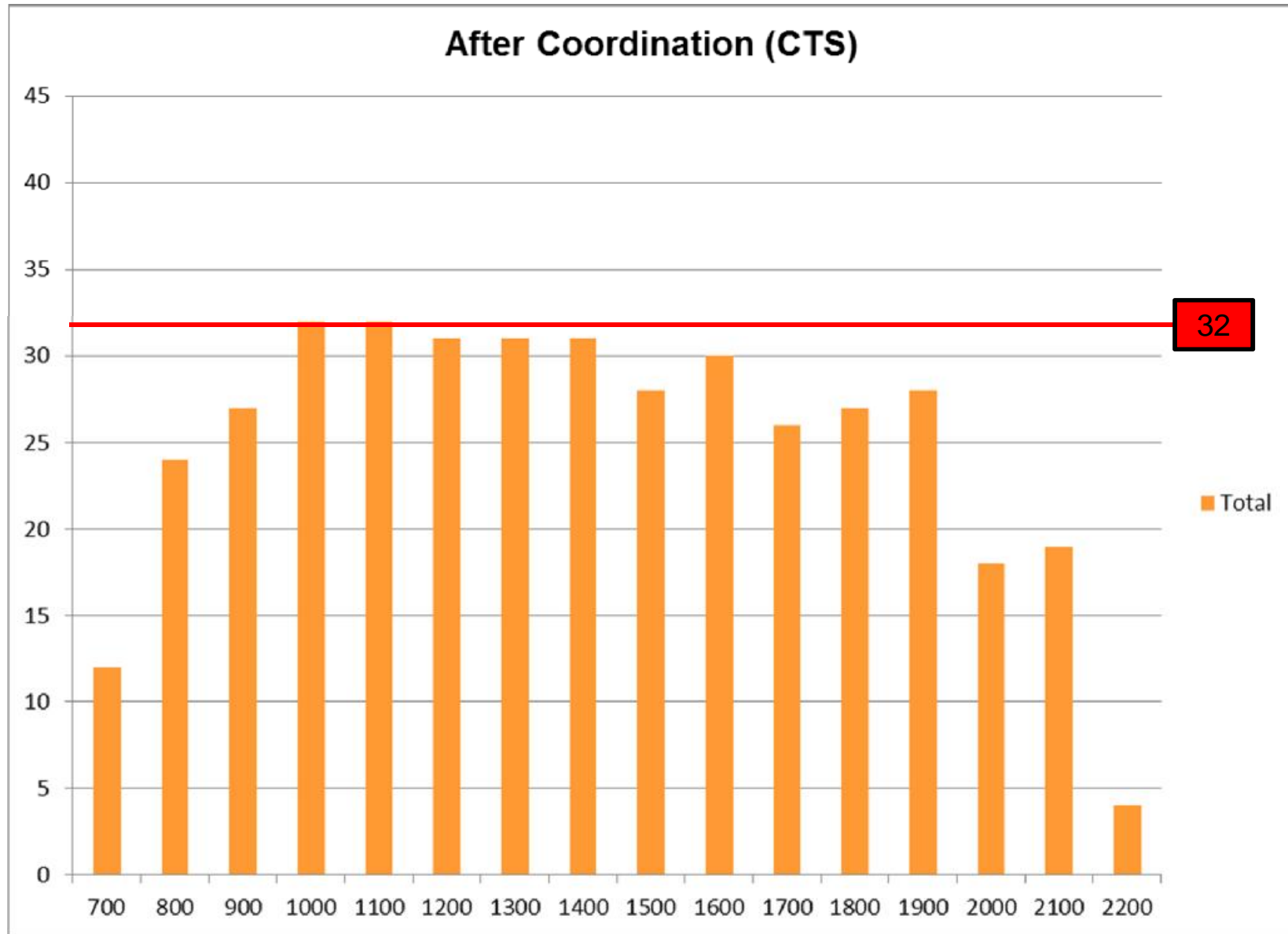
The Result of Schedule Facilitation



Example of New Chitose Airport (Level 2)



Example of New Chitose Airport (Level 2)



The Proposed New Text (1)

7.2 GENERAL PRIORITIES FOR SCHEDULE FACILITATION

7.2.1 Facilitators should facilitate the schedule in the available capacity based on the following broad priority order:

- 1) A series of scheduled services;
- 2) Ad hoc services;
- 3) Other operations.

7.2.2 Airlines and other aircraft operators should use message formats specified in SSIM Chapter 6 to submit their planned operations.

7.3 PRIMARY CRITERIA FOR SCHEDULE FACILITATION

7.3.1 In seeking voluntary schedule adjustments, the following priorities will apply:

7.3.2 Services from the previous equivalent season

Services planned and operated during the previous equivalent season should have priority over new demand for the same required timings. Services that plan to operate unchanged from the previous equivalent season should have priority over services that plan to change the time and/or aircraft size (in the case of terminal congestion).

The Proposed New Text (2)

7.3.3 Year Round Continuations

New services that extend an existing operation into a year round service should have priority over entirely new demand for the same required timings.

7.3.4 Effective Period of Operation

Where two or more airlines could potentially resolve a period of congestion through voluntary schedule adjustment, the schedule effective for the longer period of operation should have priority for the required timings.

7.3.5 Ad Hoc Services

Airlines intending to operate a series of flights should have priority over those intending to operate on an ad hoc basis.

7.3.6 Operational Factors

Services affected by a curfew period at another airport or are constrained by other relevant operational factors should have priority over other similar demand for the required timings.