

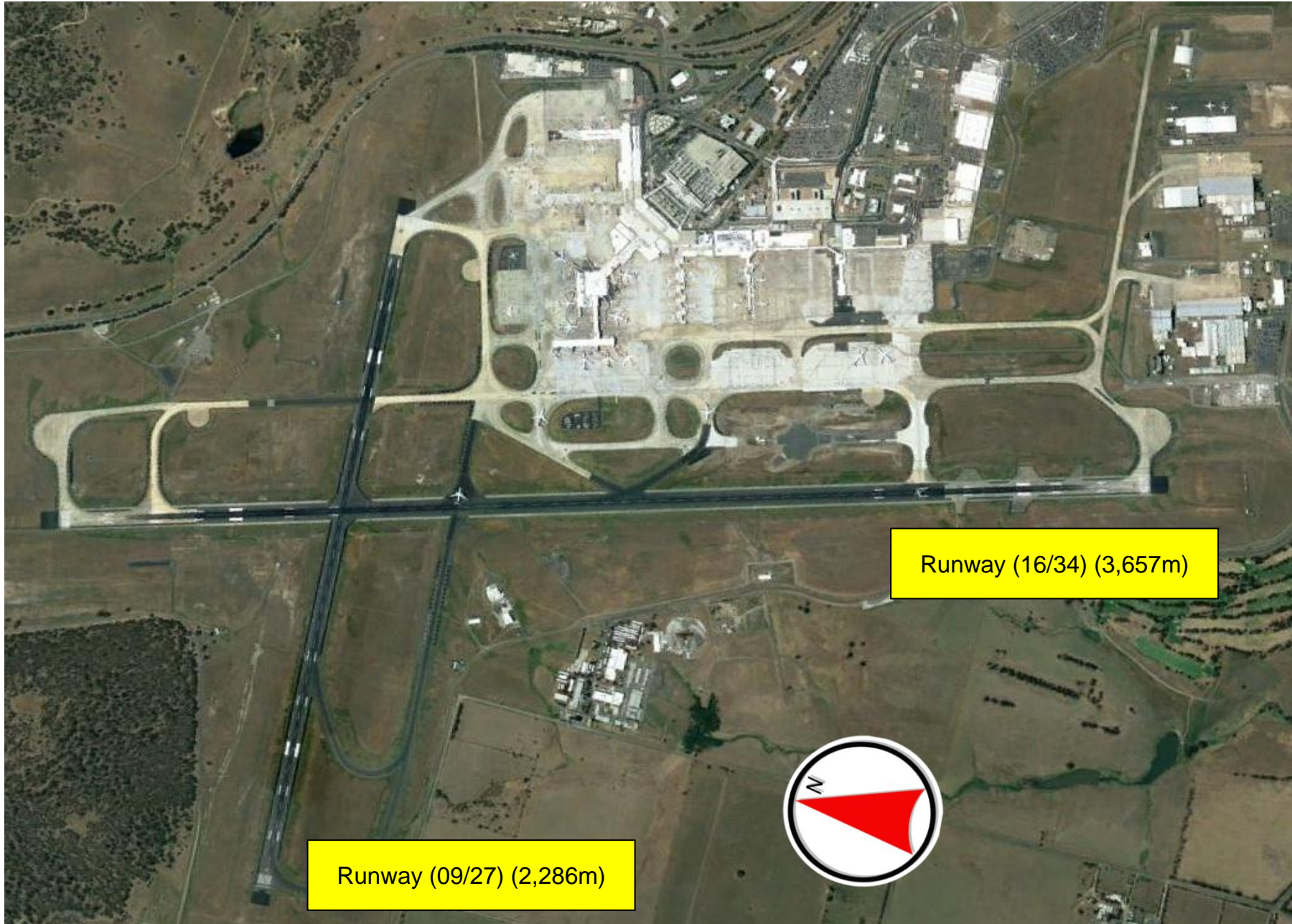
Asia/Pacific Airport Coordinators Association (APACA)

Agenda Item 5

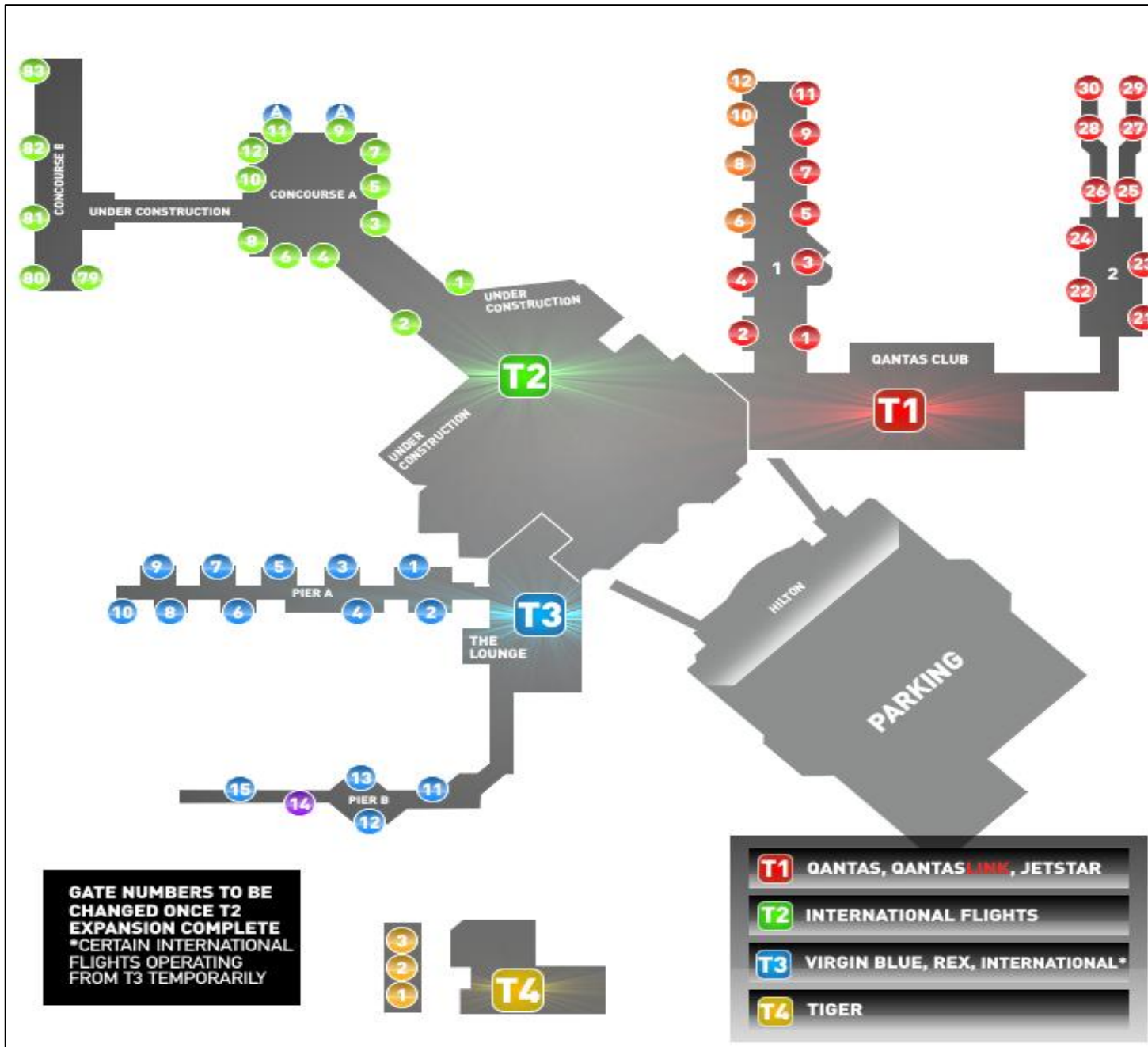
Runway Demand Management Scheme (RDMS),
Melbourne Airport

14th APACA meeting
13 June, 2017
Kuala Lumpur, Malaysia

Melbourne International Airport (MEL)



Terminal Map at MEL



Coordination Parameters at MEL

MELBOURNE-S17

I Apron Parking at the **International Terminal**

- 19 aircraft, including 7 388, 3 346, 2 77W, 3 744, 1 332, and 3 73H or
- 25 aircraft, including 2 388, 3 346, 2 77W, 3 744, 1 332, 10 321 and 3 73H or any combination mixing 388 and 73H/321
- 8 positions are available for remote parking and freighters.
- Buffer between occupancies is 15 minutes

I Maximum **International Passenger Arrival Rates**

The following arrival passenger flow rates apply to international services:
3490 inwards seats in any 60 minute period

I Maximum **International Passenger Departure Rates**

The following departure passenger flow rates apply to international services:
3784 outwards seats in any 60 minute period

I Curfew: Nil.

I Local Time

26MAR-02APR UTC +11
03APR-01OCT UTC +10
02OCT-28OCT UTC +11